

T A N C O S L U R R Y T A N K E R S

Models 800, 1000, 1200, 1400, 1600.

MAINTENANCE AND OPERATION.

PARTS LIST.

WMIO - M0893

When ordering spare parts, it is essential to give the following information:

1. Serial number of Slurry Tanker.
2. Size of Slurry Tanker.
3. Serial number of Pump.
4. Part reference number and prefix.
5. Part description.
6. Number of each part required.

1. FITTING TO TRACTOR.

- (1) Connect Tanker to Tractor on pick-up Hitch or Drawbar. Ensure pump turns freely. Measure P.T.O. Shaft leaving minimum 3" of closure to allow turning circle and shaft closing. Ensure P.T.O. Guards are fitted and secured with chains.
- (2) Connect Hydraulic hose to external services for opening of rear valve, check correct operation.
- (3) Connect brake hose if hydraulic brakes fitted, check operation.
- (4) Check that all valves and hoses are operational. Test run tanker with control lever set in pressure position (with valves closed) to ensure that there are no leaks. Check rear inspection door. Should this door develop Air Leaks at any stage, remove and check that Rubber Seal is intact. The door is fitted with adjustable locking clamps which can be tightened if and when necessary.
- (5) Check Gearbox and Pump oil, fill to mark if low.
Oil to Use: Gearbox - SAE 90
Oil Tank - SAE 30 in Summer
 - SAE 20 in Winter
- (6) Check that drip lubricators are set at 15 drops per minute.
- (7) Check that wheel nuts are tight and hubs are greased. Check Tyre Pressures:

RECOMMENDED TYRE PRESSURES

<u>TYRE SIZES</u>	<u>PRESSURE</u>
	Bar (P.S.I.)
12.5 x 15	4.2 (63)
16.0 x 20	4.2 (63)
F.20	5.0 (73)
18 x 19.5	5.0 (73)
1300 x 530 x 533	4.2 (63)

2. SAFETY WARNING

- (1) Ensure that the tractor P.T.O. shield and pump P.T.O. guard are in place and the P.T.O. shaft guard is secured with chains.
- (2) P.T.O. guards should be kept well lubricated and cleaned daily.
- (3) Do not open the rear manhole while the tanker is pressurised.
- (4) Operators should be properly trained and know how to use the tanker controls while standing as far away as possible from the revolving shaft.
- (5) Suitable close-fitting clothing should be worn with no loose fabric liable to catch in the shaft.
- (6) Take care to match tractor to tanker on soft or sloping ground.
- (7) Do not turn shaft with P.T.O. engaged.
- (8) If you have any doubt as to the safe operation of a Tanco Slurry Tanker advice should be sought from your local dealer or direct from Manufacturer.

OPERATING INSTRUCTIONS

TO FILL

1. Connect the 6 inch filling hose to the manual fill valve coupling.
2. Submerge the other end of the filling hose in the slurry.
3. Check that all valves are fully closed.
4. Move the Flow Valve Lever on the pump fully to the left, to fill (F)
5. Engage the P.T.O. and run pump at max. of 540 r.p.m.* till manometer reads - 0.5 bar.
6. Open the manual fill valve when filling will commence.
7. When the tank is full (slurry in the sight glass), the automatic cut-out valve will close and the sound of the pump will change. When this happens close the manual fill valve, set Flow Valve Lever on the pump to the central position (N), then disengage the P.T.O.
8. Disconnect the 6 inch filling hose from the manual valve coupling and store on hooks at side of tanker body.

TO SPREAD

1. Move the Flow Valve Lever fully to the right to spread (S).
2. Engage the P.T.O. and run at max. 350 r.p.m.*
3. Travel at a suitable speed and adjust the spreader plate to achieve the coverage required.
4. Disengage the P.T.O. when turning.
5. When the tank is empty, close the rear valve.
6. Disengage the P.T.O.

* P.T.O. speed should be set at lowest possible revs to achieve the desired results - too high a speed when spreading will result in relief valve blowing off continuously, and when filling could cause hose collapse.

CONTINUOUS OPERATIONAL CHECKS

1. Keep outer case of pump clean, the fins are for cooling the unit.
2. Ensure correct oil levels in gearbox and pump oil tank.
3. Keep lubricator adjustment correct (15 drops/min.)
4. Ensure pressure relief valves are free and working.
5. Ensure both float ball valves are free and working.
6. Open drain valve in bottom ball trap daily.
7. Check all hoses for cracks or damage, replace if necessary.
8. Check P.T.O. guards, and anchor chains, replace if necessary.
9. Keep wheel nuts tight.
10. Keep brakes adjusted if fitted.

VACUUM PUMP CARE AND MAINTENANCE

When the pump is working, make sure that the quantity of oil at each drip greaser is 15 drops/minute. check oil-level before each use. With a full oil-tank the pump can work about 4 hours charging or discharging.

The thickness of the blades as well as the machining of the interior of the housing ensure long life. The approximate life of the blades is about 2,500 operations of charge or discharge. After this time, blades should be checked and if necessary, replaced.

Every 500 operations of charge/discharge, empty the gearbox oil (hole B), plug the hole again and fill in 0.5 litre (about 1 pint) of SAE 90 type oil through hole A.

When exchanging the blades or whenever the pump is dismantled, fit new gaskets.

To ensure best conditions of work for the pump we recommend that you clean the interior of the pump every 1,000 charges/discharges or every 6 months. For this it is not necessary to dismantle the pump; simply undo the hose from the tanker to the pump; put the handle in position "Fill." and while driving the pump at low speed, add small quantities of gas-oil through the hose coupling until the gas-oil that comes from the outlet (no. 26) is clean.

GUARANTEE

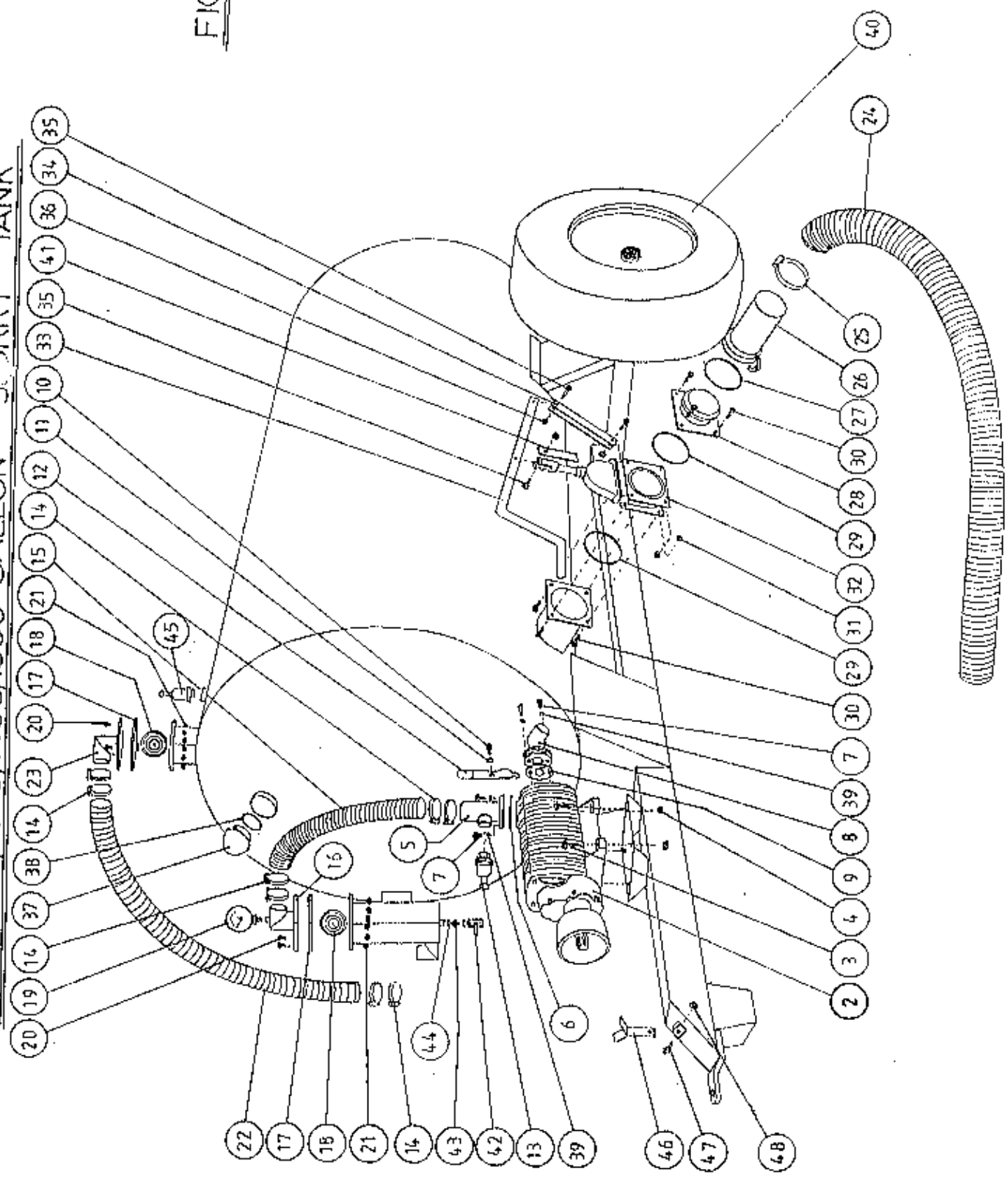
The pump is under guarantee in case of possible defects of fabrication. The Serial Number of the pump is stamped on the upper middle rib of the pump housing. This number should be quoted when ordering spare parts or in any correspondence relating to the pump. For Guarantee details see last page of booklet.

TROUBLE SHOOTING

<u>Symptom</u>	<u>Possible cause</u>	<u>Remedy</u>
Loss of or poor suction	Pipe blocked, leaking	Clear, replace
	Worn blades in pump	Replace
	Rear door leaking	Tighten door clamps replace door seal rubber
Pump overheating	Short of oil	Refill oil tank, adjust lubricators
Pump seized or stiff	Slurry or dirt in pump	Clean out pump and check ball float valves
	Broken blade	Renew having checked alignment and bore
	Ice in pump	Thaw out before using
	Short of oil	Refill, Adjust lubricators

800/1000/1200/1400/1600 GALLON SURRY TANK

FIG. 1



TANCO
800/1000/1200/1400/1600 GALLON
SLURRY TANK ASSEMBLY

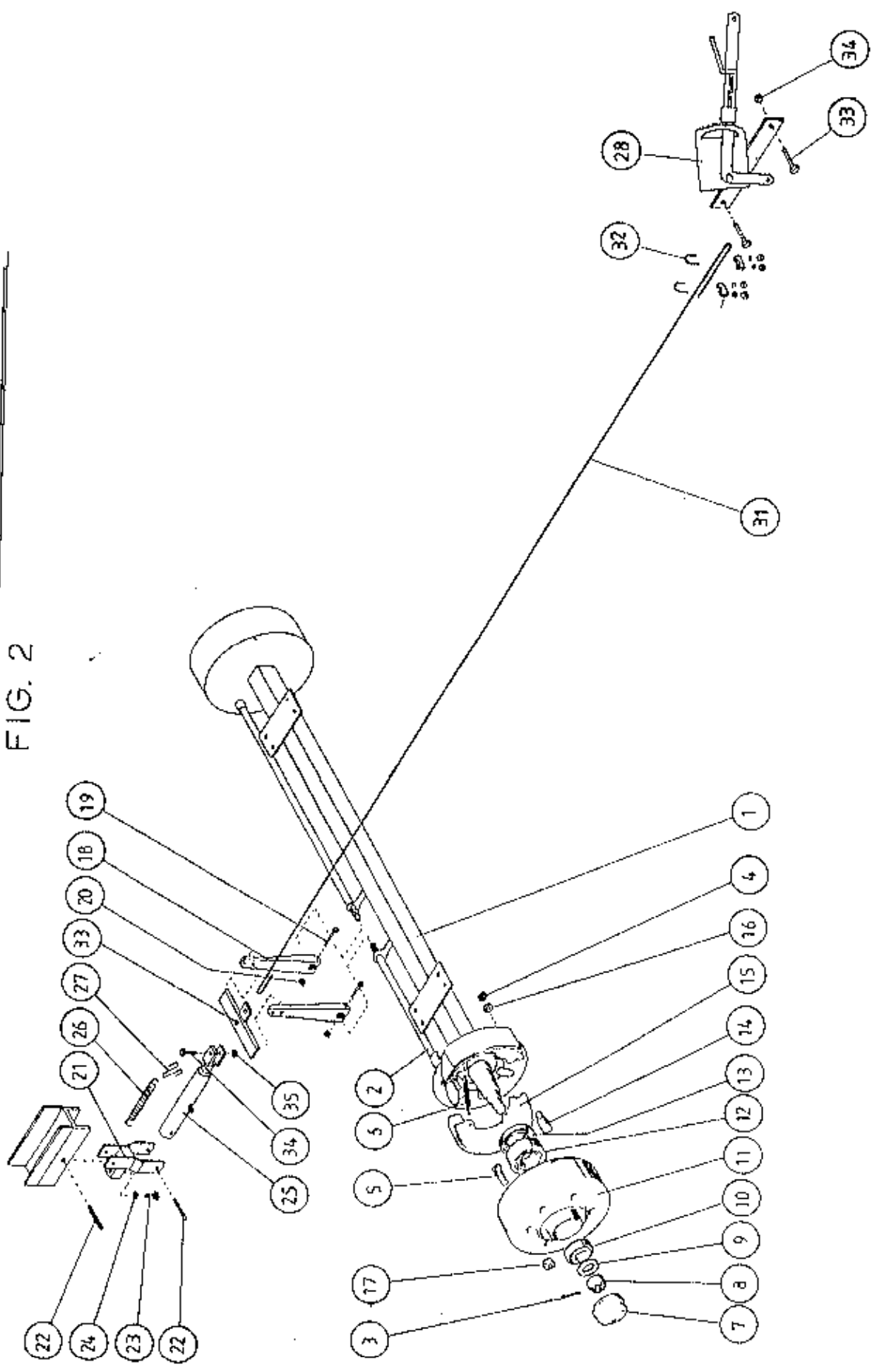
ITEM	DESCRIPTION	QTY	PART NO
1	SLURRY TANK ASSEMBLY	1	(WM08) (WM16)-MF
2	VACUUM PUMP (HERTELL)	1	M2928
3	M16 HEX HD. BOLT # 60MM LONG	4	Z26-1265
4	M16 LOCKNUTS	4	Z23-16
5	3" FLANGE HOSE CONNECTION	1	M2117
6	RUBBER SEAL	1	M2110
7	M6 GRUB SCREWS # 25MM LONG	6	M22LK17
8	EXHAUST SUCTION 90° BEND CONNECTION	1	M2119
9	SEAL	1	M22LK24
10	M6 GRUB SCREW # 15MM LONG	1	M22LK03
11	6MM DIA FLAT WASHER # 3MM THICK	1	Z11-02-06
12	FLOW VALVE LEVER	1	M2121
13	1 1/2" SAFETY VALVE	1	M2105
14	HOSE CLIPS 86MM - 95MM	8	M2124
15	3" HOSE 1.3M LONG	1	M2122-1
16	FRONT TRAP VALVE UPPER HALF	1	WM10-FTUH
17	SEAL	2	M2127
18	FLOATING BALL	1	M21251
19	MANOMETER	1	M2126
20	M6 HEX HD. SET # 20MM LONG	16	Z26-0205
21	LOCKNUTS	16	Z23-06
22	3" HOSE 1.5M LONG	1	M2122-2
23	TOP TRAP VALVE UPPER HALF	1	WM10-TTUH
24	6" DIA SUCTION HOSE 15'.0" LONG	1	M2900
25	HOSE CLIP 162MM # 176MM	1	M2114
26	6" GALVANISED FEMALE COUPLING C/W CLIPS	1	M2106
27	"O" RING FOR FEMALE COUPLING	1	M2113
28	INLET VALVE COUPLING	1	M2104

TANCO
 800/1000/1200/1400/1600/ GALLON
 SLURRY TANK ASSEMBLY
 PARTS LIST

ITEM	DESCRIPTION	QTY	PART NO
29	6" DIA "O" RING	2	M2108
30	M12 HEX HD. SET # 30MM LONG	8	Z26-0835
31	M12 LOCKNUTS	8	Z23-12
32	6" MANUAL GATE VALVE C/W SCREW ON CLEVIS	1	M2102
33	OPERATED LEVER FOR GATE VALVE	1	M2115
34	GATE VALVE CONNECTING LINKS	2	M2116
35	M10 HEX HD. BOLTS # 50MM LONG	3	Z26-0665
36	M10 LOCKNUTS	3	Z23-10
37	SIGHT GLASS	1	M2111
38	"O" RING FOR SIGHT GLASS	1	M2112
39	6MM DIA SPRING WASHER	6	Z12-02-06
40	WHEELS	2	CHECK TANK
41	VALVE LOCKING LEVER	1	WM10-231
42	3/8" # 3/8" ADAPTOR	1	Z01-06-06-06
43	3/8" DOWTY WASHER	2	Z01-04-02
45	1 1/2" SAFETY VALVE SET AT 1.5 BAR	1	M2105
46	P.T.O. SHAFT SUPPORT BRACKET	1	WM10-55B
47	M8 HEX HD SET X 25MM LONG	1	Z26-0205
48	M8 LOCKNUT	1	Z23-08

800/1000/1200/1400/1600 GALLON SLURRY TANK

FIG. 2



TANCO WM10-PL2
800/1000/1200/1400 1600/ GALLON

SLURRY TANK AXLE ASSEMBLY

PARTS LIST

ITEM	DESCRIPTION	QTY	PART NO
1	AXLE ASSEMBLY	1	WM10-AA
2	BRAKE SHAFT	2	GIVE DETAILS OF AXLE
3	SPLIT PIN	2	" " " "
4	NUT	2	" " " "
5	WHEEL STUD	12	M22AWS
6	BRAKE SPRING	2	GIVE DETAILS OF AXLE
7	HUB CAP (800,1000,1200 GALLON)	2	GIVE DETAILS OF AXLE
	HUB CAP (1400,1600 GALLON)	2	
8	CASTLE NUT	2	GIVE DETAILS OF AXLE
9	WASHER	2	GIVE DETAILS OF AXLE
10	OUTER BEARING (800 GALLON)	2	GIVE DETAILS OF AXLE
	OUTER BEARING (10, 12, 14, 1600 GAL)	2	GIVE DETAILS OF AXLE
11	BRAKE DRUM	2	GIVE DETAILS OF AXLE
12	INNER BEARINGS (800 GALLON)	2	GIVE DETAILS OF AXLE
	INNER BEARINGS (10,12 & 1400 GAL)	2	GIVE DETAILS OF AXLE
	INNER BEARINGS (1600 GALLON)	2	GIVE DETAILS OF AXLE
13	SEAL (800, 1000 GALLON)	2	M22AB-55
	SEAL (1200,1400,1600 GALLON)	2	M22AB-65
14	ANCHOR PIN	2	GIVE DETAILS OF AXLE
15	BRAKE SHOE AND LININGS	2PR	GIVE DETAILS OF AXLE
16	SPRING WASHER	2	GIVE DETAILS OF AXLE
17	WHEEL NUT	12	M22AWN
18	BRAKE LEVER	2	GIVE DETAILS OF AXLE
19	M8 HEX HD. SET * 50MM LONG	2	Z26-045S
20	M8 LOCKNUT	2	Z23-08
21	SWIVEL BRACKET ASSEMBLY	1	M2129
22	TENSION PIN	1	Z03-21-29
23	M12 HEX HD SET * 65MM LONG	1	Z26-0802R
24	M12 HEX NUT	1	Z18-12
25	BRAKE RAM	1	M2129C
26	SPRING	1	Z07-15
27	CLIP	1	M2129BC

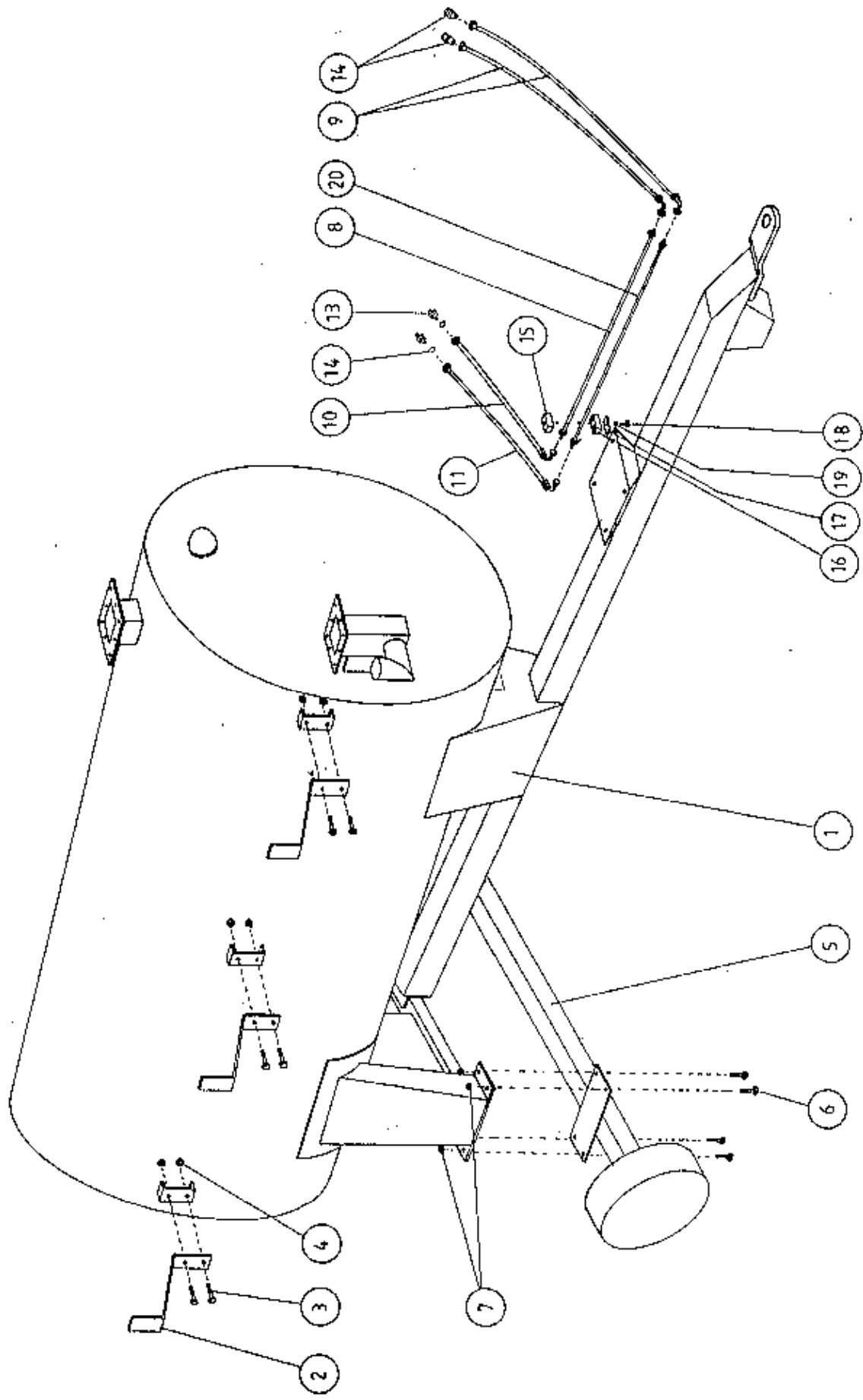
TANCO
800/1000/1200/1400/1600 GALLON
SLURRY TANK AXLE ASSEMBLY
PARTS LIST

WM10-PL2

ITEM	DESCRIPTION	QTY	PART NO
28	HAND BRAKE LEVER ASSEMBLY	1	M2130
31	1/4" DIA WIRE ROPE * 3METER LONG	1	708-12
32	WIRE ROPE GRIPS	4	739-03
33	EQUALISING LINK ASSY	1	WM10-B1A
34	M12 HEX HD SLOT * 45MM LONG	1	726-085B
35	M12 LOCKNUT	1	723-12

800/1000 200/1400/1600 GALLON SLURRY TANK
WITH HYDRAULIC BRAKES

FIG. 3.

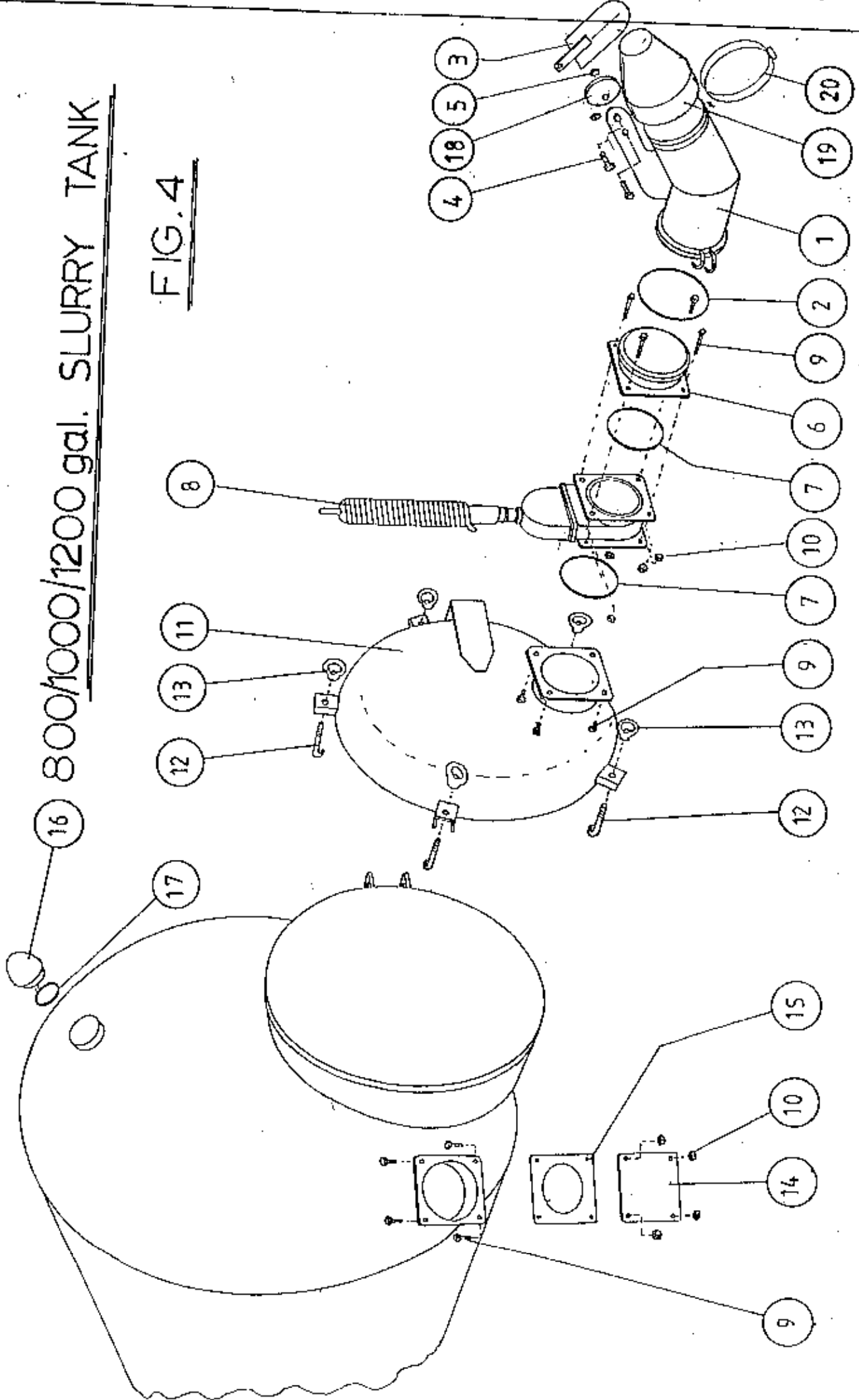


TANCO
 800/1000/1200/1400/1600/ GALLON
 SLURRY TANK SIDE VIEW
 PARTS LIST

1	SLURRY TANK ASSEMBLY	1	(WM08)
			(WM16) -MF
2	HOSE BRACKET	1	WM10-151
3	M8 HEX HD. BOLT * 35MM	6	Z26-042B
4	M8 LOCKNUTS	6	Z23-08
5	AXLE ASSEMBLY	1	WM10-AA
6	M10 HEX HD. BOLTS * 50MM LONG	8	Z26-066S
7	M16 LOCKNUTS	8	Z23-16
	HYDRAULIC TUBE	1	WM10-11"
9	96" ST/90 3/8" D/W HOSE	2	Z38-R2-96-S9
10	36" ST/90 3/8" D/W HOSE	1	Z38-R2-36-S9
11	24" ST/90 3/8" D/W HOSE	1	Z38-R2-24-S9
12	1/2" MALE Q/R COUPLING	2	Z01-15-081
13	1/2" * 3/8" ADAPTOR	2	Z01-06-06-08
14	1/2" DOWTY WASHER	2	Z01-04-03
15	PIPE CLAMP BOTTOM	4	Z01-24-26
16	PIPE CLAMP TOP	4	Z01-24-27
17	CLAMPING PLATE	4	Z01-24-28
18	8MM HEX HD. BOLT * 35MM LONG	4	Z26-042B
19	8MM SPRING WASHER	4	Z12-02-08
	BRAKE TUBE	1	WM10-BT

800/1000/1200 gal. SLURRY TANK

FIG. 4



WM10-PL4

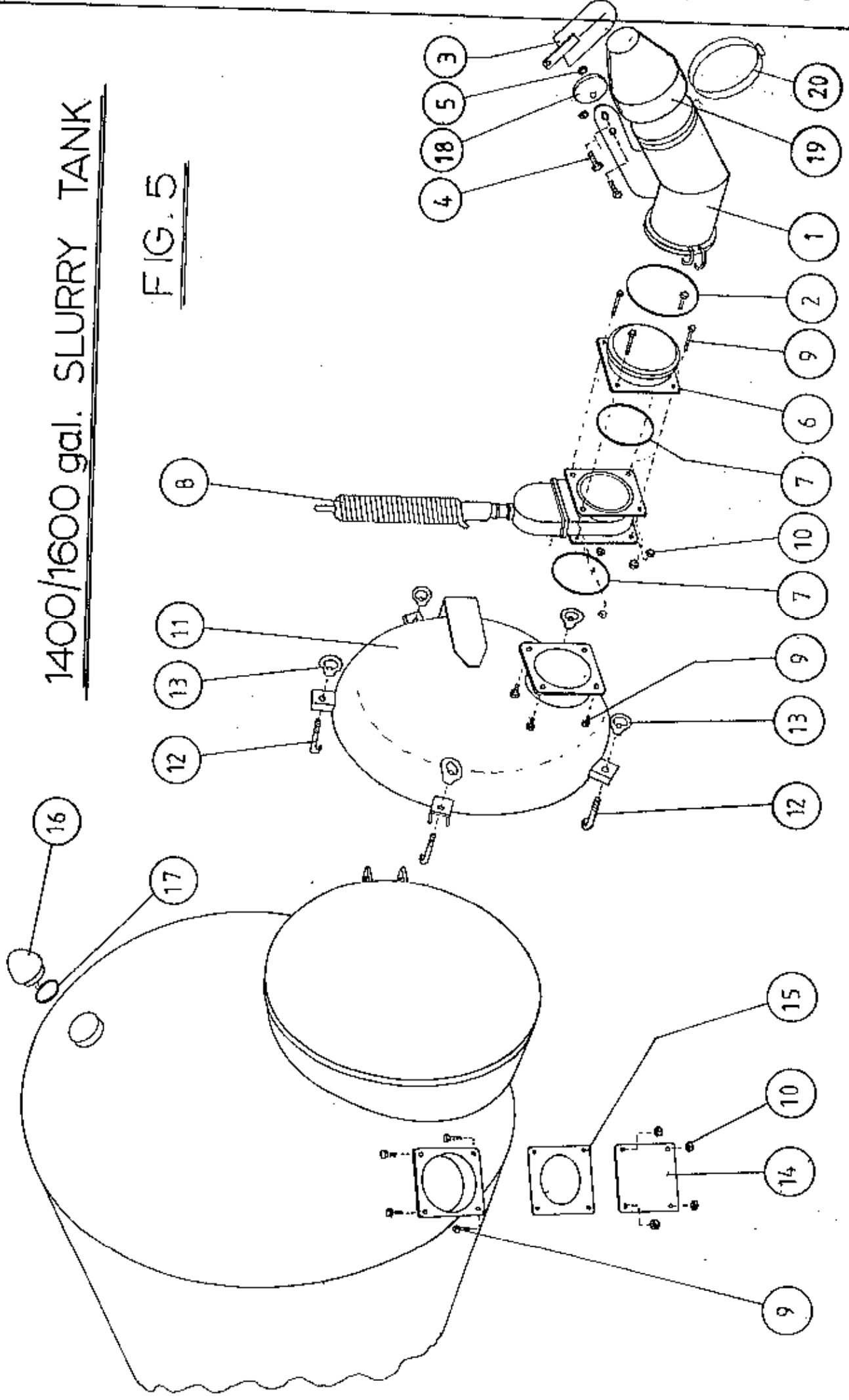
TANCO

800/1000/1200 FALLON SLURRY TANK
SPREADER SYSTEM

ITEM	DESCRIPTION	QTY	PART NO
1	45 SPREADER UNIT	1	M21038
2	"O" RING FOR COUPLING	1	M2113
3	SPLASH PLATE	1	WM21038-SP
4	M16 HEX HD. SET # 30MM LONG	2	Z26-120S
5	M16 LOCKNUT	2	Z23-16
6	INLET VALVE COUPLING	1	M2104
7	6" DIA "O" RING	2	M2108
8	6" FLANGE GATE VALVE C/W HYDRAULIC ACTUATOR	1	M2101
9	M12 HEX HD. BOLT # 30MM LONG	12	Z26-082S
10	M12 LOCKNUTS	12	Z23-12
11	REAR DOOR ASSEMBLY (20" DIA)	1	WM14-RD
12	HOOK BOLTS	4	M2903B
13	HOOK BOLT CLAMP	4	M2903BC
14	6" FLANGE PLUG	1	M2109
15	6" FLANGE RUBBER SEAL	1	M2110
16	SIGHT GLASS	1	M2111
17	"O" RING FOR SIGHT GLASS	1	M2112
18	CAM	1	WM21038-08
19	CONE	1	M22-120
20	CLIP	1	M22-175

1400/1600 gal. SLURRY TANK

FIG. 5



WM10-PL5

TANCO
1400/1600 GALLON SLURRY TANK
SPREADER

ITEM	DESCRIPTION	QTY	PART NO
1	45 SPREADER UNIT	1	M2103B
2	"O" RING FOR COUPLING	1	M2113
3	SPLASH PLATE	1	WM21038-SP
4	M16 HEX HD. SET # 30MM LONG	2	Z26-120S
5	M16 LOCKNUT	2	Z23-16
6	INLET VALVE COUPLING	1	M2104
7	6" DIA "O" RING	2	M2108
8	6" FLANGE GATE VALVE C/W HYDRAULIC ACTUATOR	1	M2101
9	M12 HEX HD. BOLT # 30MM LONG	12	X26-082S
10	M12 LOCKNUTS	12	Z23-12
11	REAR DOOR ASSEMBLY (30" DIA)	1	WM14-RD
12	HOOK BOLTS	7	M2903B
13	HOOK BOLT CLAMP	7	M2903BC
14	6" FLANGE PLUG	1	M2109
15	6" FLANGE RUBBER SEAL	1	M2110
16	SIGHT GLASS	1	M2111
17	"O" RING FOR SIGHT GLASS	1	M2112
18	CAM	1	WM21038-08
19	CONE	1	M22-120
20	CLIP	1	M22-175

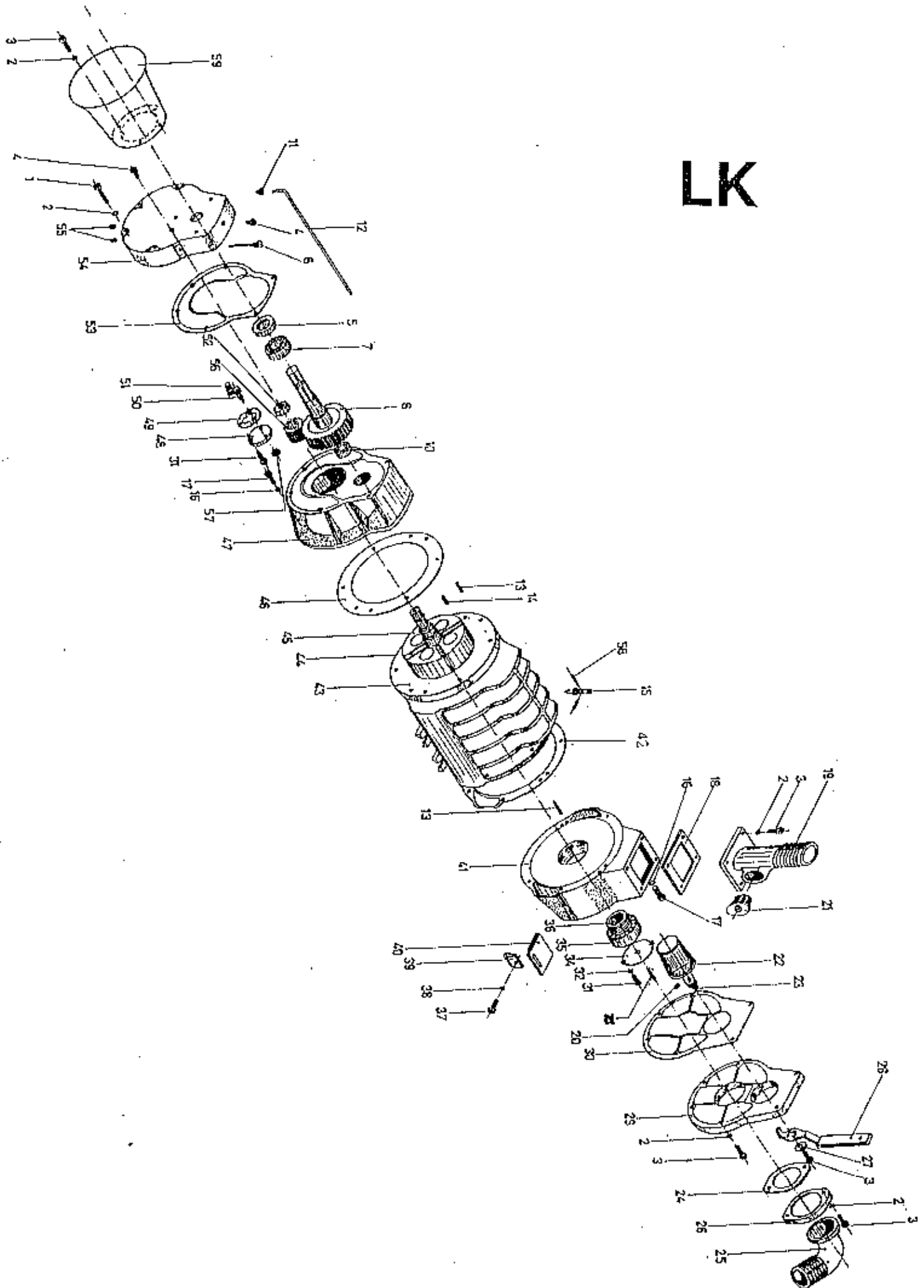
LK SPARES

<u>Item no</u>	<u>Code</u>	<u>Part</u>	<u>Quantity</u>	<u>Pump size</u>
1.	M22LK01-6/10	Screw M8 x 50	4	6/10,000
2.	M22LK02	Washer M8	18	All
3.	M22LK03	Screw M8x25	15	All
4.	M22LK04	Oil-tank screw 3/8 gas	3	All
5.	M22LK05	Sealing package 35x55x10	1	All
6.	M22LK06-6/10	Oil level indicator	1	6/10,000
7.	M22B11-3/8	Bearing 6307	1	6/10,000
8.	M22LK08-6/10	Attach gear	1	6/10,000
10.	M22LK10	Bearing 6304	1	All
11.	M22LK11	Tube adjuster	2	All
12.	M22LK12-80	Copper Tube	1	8,000
12.	M22LK12-100	Copper Tube	1	10,000
13.	M22LK13	Elastic pin	4	All
14.	M22LK14-6/10	Key	1	6/10,000
15.	M22LK15	Drip-feeder	1	All
16.	M22LK16	Washer M10	12	All
17.	M22LK17	Screw M10 x 25	12	All
18.	M22LK18-6/10	Gasket	1	6/10,000
19.	M22LK19-6/110	Outlet 80mm	1	6/10,000
20.	M22LK20	O - Ring	1	All
21.	M22LK21	Tap 1 1/2 DIN 290	1	All
22.	M22LK22-6/10	Butterfly valve	1	6/10,000
23.	M22LK23	Spring	1	All
24.	M22LK24	Exhaust elbow gasket	1	All
25.	M22LK25-6/10	Exhaust elbow	1	6/10,000
26.	M22LK26	Flange	1	All
27.	M22LK27	Washer 30x9x4	1	All
28.	M22LK28	Handle	1	All
29.	M22LK29-6/10	Distributor cover	1	6/10,000
30.	M22LK30-6/10	Gasket	1	6/10,000
31.	M22LK31	Screw M6x15	5	All
32.	M22LK32	Washer M6	2	All
33.	M22LK33	Grease M10 x 1	1	All
34.	M22LK34-6/10	Bearing Cover	1	6/10,000
35.	M22LK35-6/10	Bearing 6208	2	6/10,000
36.	M22LK36-6/10	Sealing package 60x45x12	2	6/10,000
37.	M22LK37	Screw M6 x 15	1	All
38.	M22LK38	Copper washer	1	All
39.	M22LK39	Hinge	1	All
40.	M22LK40	Plug (non-return valve)	1	All
41.	M22LK41-6/10	Distributor body	1	6/10,000
42.	M22LK42-6/10	Gasket	1	6/10,000
43.	M22LK43-8	Pump body	1	8,000
43.	M22LK43-10	Pump body	1	10,000
44.	M22LK44-8	Vane	4	8,000
44.	M22LK44-10	Vane	4	10,000
45.	M22LK45-8	Rotor	1	8,000
45.	M22LK45-10	Rotor	1	10,000
46.	M22LK46-6	Gasket	1	6/10,000
47.	M22LK47-6/10	Gear Box	1	6/10,000
48.	M22LK48	Oil pump cover	1	All
49.	M22LK49	Oil pump gasket	1	All
50.	M22LK50	Oil pump attach gear	1	All
51.	M22LK57	Oil pump small gear	1	All

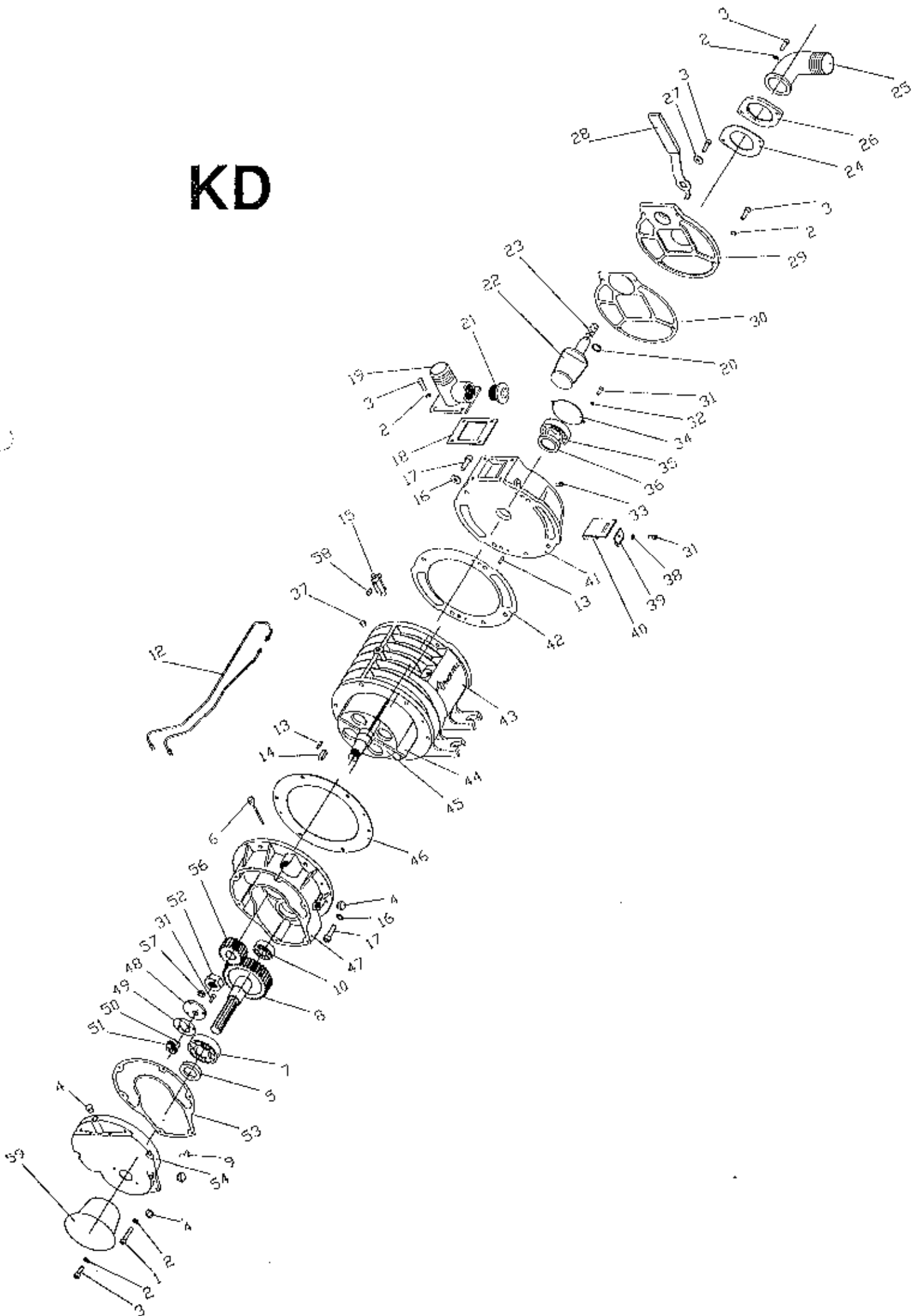
LK SPARES

<u>Item no</u>	<u>Code</u>	<u>Part</u>	<u>Quantity</u>	<u>Pump size</u>
52.	M22LK52	Self closing screw M2x2	1	All
53.	M22LK53-6/10	Gasket	1	6/10,000
54.	M22LK54-6/10	Gear box cover	1	6/10,000
55.	M22LK55	Set screw	2	All
56.	M22LK56-6/10	Small gear	1	6/10,000
57.	M22LK57	Grease seal 12 x 20 x 5	1	All
58.	M22LK58	Hose nipple	4	All
59.	M22LK59	PTO protector	1	All

LK



KD



KD SPARES

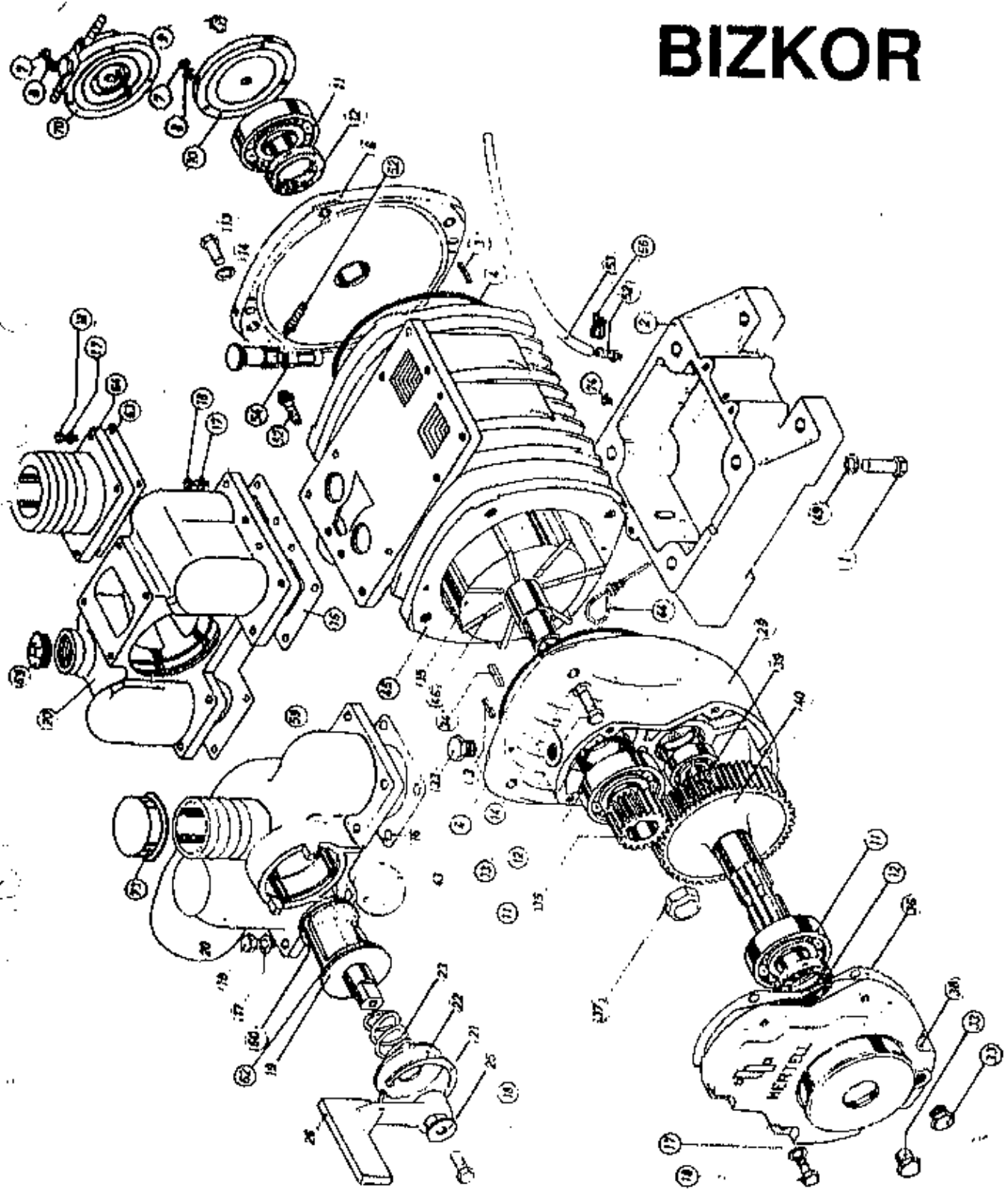
<u>ITEM NO</u>	<u>CODE</u>	<u>PART</u>	<u>QUANTITY</u>	<u>PUMP SIZE</u>
1.	M22LK01-6/10	Screw M8 x 50	4	KD-6/12000
2.	M22LK02	Washer M8	18	All
3.	M22LK03	Screw M8 x 25	15	All
4.	M22LK04	Tap	3	All
5.	M22LK05	Grease seal	1	All
6.	M22KD06-6/12	Level indicator	1	KD-6/12000
7.	M22B11-3/10	Bearing 6307	1	KD-6/12000
8.	M22KD08-6/12S	Attack gear	1	KD-6/12000
9.	M22KD09	Tee Nipple c/w tubes	1	All
10.	M22LK10	Bearing 6304	1	All
11.	M22LK11	Tube adjustments	2	All
12.	M22KD12-8R	Rubber tube c/w nipples	1	KD8,000
12.	M22KD12-10R	Rubber tube c/w nipples	1	KD10,000
12.	M22KD12-80	Copper tube	1	KD-8,000
12.	M22KD12-100	Copper tube	1	KD-10,000
13.	M22LK13	Elastic pin	1	All
14.	M22LK14-6/10	Key	1	KD-6/12,000
15.	M22LK15	Drip feeder	2	All
16.	M22LK17	Washer M10	12	All
17.	M22LK17	Screw M10 x 25	12	All
18.	M22LK18-6/10	Rubber Gasket	1	KD-6/12,000
19.	M22LK19-6/10	Outlet 80mm	1	KD-6/12,000
20.	M22LK20	O-Ring	1	All
21.	M22LK21	Tap	1	All
22.	M22KD22-6/12	Conic distributor	1	KD-6/12,000
23.	M22LK23	Spring	1	All
24.	M22LK24	Exhaust rubber gasket	1	All
25.	M22LK25-6/10	Exhaust	1	KD-6/12,000
26.	M22LK26	Flange	1	All
27.	M22LK27	Washer	1	All
28.	M22LK28	Handle	1	All
29.	M22KD29-6/12	Distributor cover	1	KD-6/12,000
30.	M22KD30-6/12	Gasket	1	KD-6/12,000
31.	M22LK31	Screw M6 x 15	5	All
32.	M22LK32	Washer M6	2	All
33.	M22LK33	Grease Nipple	1	All
34.	M22LK34-6/10	Bearing cover	1	KD-6/12,000
35.	M22LK35-6/10	Bearing 6208	2	KD-6/12,000
36.	M22LK36-6/10	Grease seal 60x45x12	2	KD-6/12,000
37.	M22LK37	Plastic tap	1	All
38.	M22LK38	Copper washer M6	1	All
39.	M22LK39	Hinge	1	All
40.	M22LK40	Plug	1	KD-6/12,000
41.	M22KD41-6/12	Distributor	1	KD-6/12,000
42.	M22KD42-6/12	Gasket	1	KD-6/12,000
43.	M22KD43-8	Pump body	1	KD-8,000
43.	M22KD43-10	Pump body	1	KD-10,000
44.	M22LK44-8	Vane	4	KD-8,000
44.	M22LK44-10	Vane	4	KD-10,000
45.	M22LK45-8	Rotor	1	KD-8,000
45.	M22LK45-10	Rotor	1	KD-10,000
46.	M22LK46-6/10	Gasket	1	KD-6/12,000
47.	M22KD47-6/12	Gear box	1	KD-6/12,000
48.	M22LK48	Oil pump cover	1	All
49.	M22LK49	Oil pump gasket	1	All

<u>ITEM NO</u>	<u>CODE</u>	<u>PART</u>	<u>QUANTITY</u>	<u>PUMP SIZE</u>
50.	M22LK50	Oil pump gear	1	All
51.	M22LK51	Oil pump gear	1	All
52.	M22LK52	Set screw	1	All
53.	M22LK53-6/10	Gaslet	1	All
54.	M22KD54-6/12	Gear box cover	1	KD-6/12,000
56.	M22KDS6-6/12	Small gear	1	KD-6/12,000
57.	M22LK57	Grease seal 12x20x5	1	KD-6/12,000
58.	M22LK58	Hose nipple M6	1	All
58.	M22KD58	Hose nipple rubber	5	All
59.	M22LK59	PTO-Guard	4	All
60.	M22KD99	3/8" BSP sight glass	1	All

A77.5E

Hertel 600 900

BIZKOR



SPARE PARTS FOR BIZKOR VACUUM PUMP

<u>NO.</u>	<u>CODE:</u>	<u>DESCRIPTION:</u>
1	M22B 1	SCREW B-1/10000
2	M22B 2-5/8	OIL TANK B-5/8000
2	M22B 2-10	OIL TANK B-10000
3	M22B3	KEY B-1/10000
4	M22B4-3/8	GASKET B-3/8000
4	M22B4-10	GASKET B-10000
6	M22B6-3/8	END PLATE B-3/8000
6	M22B6-10	END PLATE B-10,000
7	M22B7	SCREW B-1/1000
8	M22B8	WASHER B-1/10000
9	M22B9	GREASE NIPPLE B-1/10000
10	M22B10-3/8	BEARING COVER B-3/8000 35 X 55 X 10
10	M22B10-10	BEARING COVER B-10000
11	M22B11-3/8	BEARING B-3/8000
11	M22B11-10	BEARING B-10000
12	M22B12-3/8	GREASE SEAL B-3/8000
12	M22B12-10	GREASE SEAL B-10000
13	M22B13	SCREW B-1/1000
14	M22B14	WASHER B-1/10000
15	M22B15-6	ROTOR B-6000 (NOT AVAILABLE)
15	M22B15-8	ROTOR B-8000 (NOT AVAILABLE)
15	M22B15-10	ROTOR B-10000 (NOT AVAILABLE)
16	M22B16-5/8	GASKET B-5/8000
16	M22B16-10	GASKET B-10000
17	M22B17	WASHER B-1/10000
18	M22B18	SCREW B-1/10000
19	M22B19-5/8	CONE, COMP. WITH GASKETS NO 60 + 62 FOR B-5/8000
19	M22B19-10	CONE, COMP. WITH GASKETS NO 60 + 62 FOR B-10000
20	M22B20-5/8	DISTRIBUTOR BODY B-5/8000
20	M22B20-10	DISTRIBUTOR BODY B-10000
21	M22B21-5/10	RING B-5/10000
22	M22B22-5/10	WASHER B-5/10000
23	M22B23	SPRING B-1/10000
25	M22B25	WASHER B-1/10000
26	M22B26	HANDLE B-1/10000
29	M22B29-3/8	GEARBOX BODY B-3/8000
29	M22B29-10	GEARBOX BODY B-10000
33	M22B33-3/10	SCREW B-3/10000
34	M22B34-1/8	KEY B-1/8000
34	M22B34-10	KEY B-10000
35	M22B35-3/8	SMALL GEAR B-3/8000
35	M22B35-10	SMALL GEAR B-10000
36	M22B36-3/8	GASKET B-3/8000
36	M22B36-10	GASKET B-10000
37	M22B37	SCREW B-1/10000
38	M22B38-3/8	GEARBOX COVER B-3/8000
38	M22B38-10	GEARBOX COVER B-10000
40	M22B40-3/10	ATTACK GEAR B-3/10000

<u>NO:</u>	<u>CODE:</u>	<u>DESCRIPTION:</u>
43	M22B43-3/8	RUBBER BALL B-3/8000
43	M22B43-10	RUBBER BALL B-10000
44	M22B44	OIL LEVEL INDICATOR B-1/10000
45	M22B45-6	PUMP BODY B-6000 (NOT AVAILABLE)
45	M22B45-8	PUMP BODY B-8000 (NOT AVAILABLE)
45	M22B45-10	PUMP BODY B-10000 (NOT AVAILABLE)
46	M22B46-5/6	VANE B-5/6000 360 X 45 X 6
46	M22B46-8/10	VANE B-8/10000 470 X 45 X 6
49	M22B49	WASHER B-1/10000
52	M22B52	HOSE NIPPLE B-1/10000
54	M22B54	DRIP FEEDER B-1/10000
60	M22B60-5/8	GASKET B-5/8000
60	M22B60-10	GASKET B-10000
62	M22B62-5/8	GASKET B-5/8000
62	M22B62-10	GASKET B-10000
63	M22B63	GASKET B-1/10000
64	M22B64-6/10	COUPLING B-6/10000
68	M22B68	PROTECTOR B-1/10000
69	M22B69	TAP B-5/10000
70	M22B70-3/8	LUBRICATION PUMP B-3/8000
70	M22B70-10	LUBRICATION PUMP B-10000
74	M22B74	SCREW B-1/10000

Hydraulic Gate Valve

Maintenance & Care

This unit should normally be trouble free but in certain circumstances a build-up of chaff and straw can get trapped between the top of the valve paddle and the top housing. This will gradually reduce the size of the valve opening and if neglected will lead to the top flange of the paddle breaking away.

In the event of a noticeable reduction in output with the valve apparently fully open, it is advisable to open up the valve and remove the built up material as follows.

1. Remove Hydraulic hose
2. Relieve tension on spring by turning the threaded spiggle which protrudes through spring, in an anti-clock direction until the spring hangs loose.
3. Undo the 6 socket screws which join the top and bottom sections of the valve, and lift off the top section complete with paddle taking care not to damage the gasket.
4. Detach the paddle from its spindle and using a large screwdriver or equivalent, remove the packed material from the top housing.
5. Re-assemble valve in reverse order to above and re-tension spring to original setting by turning spindle clockwise.
6. Re-connect hose and test operation of valve.

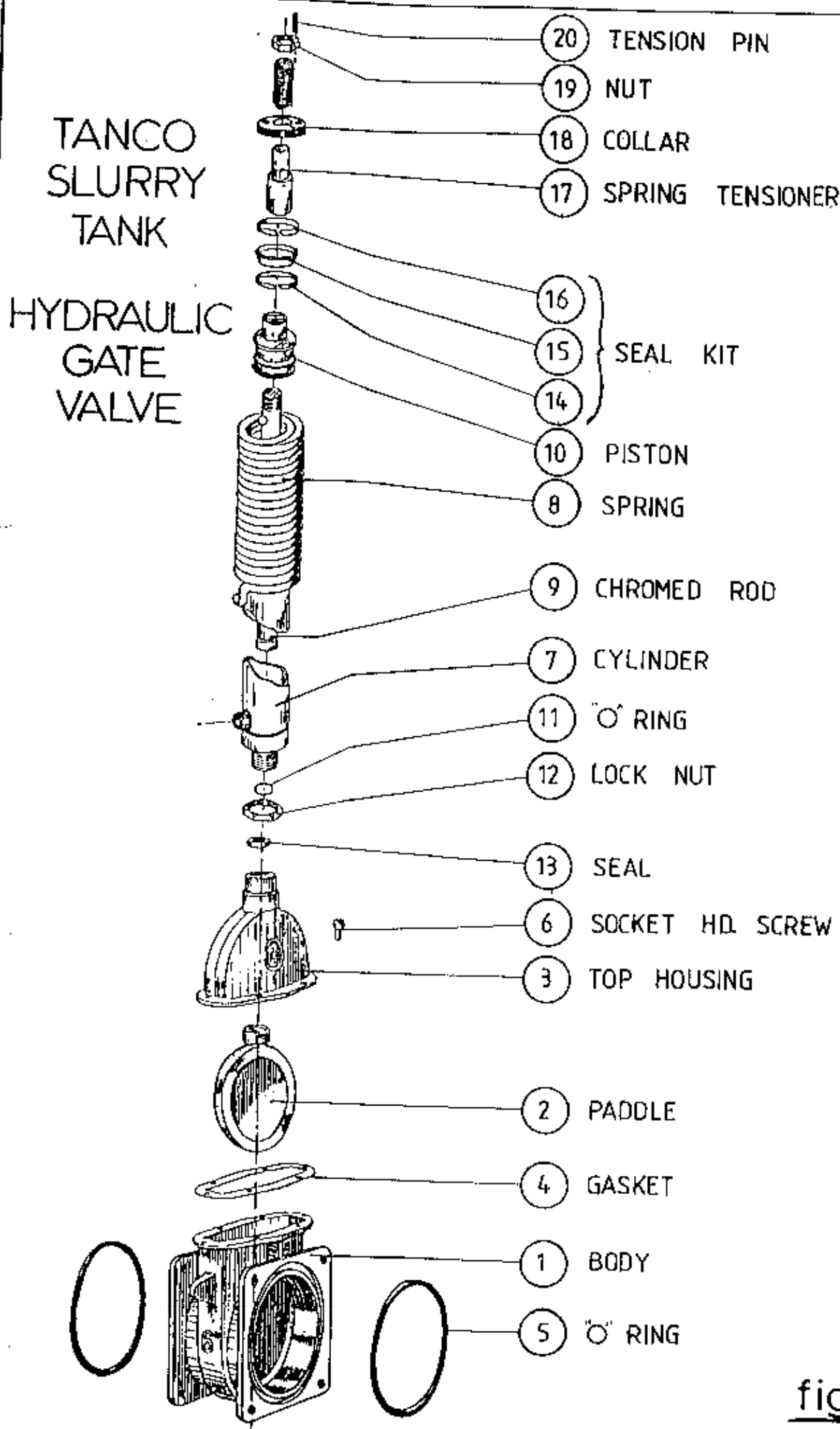
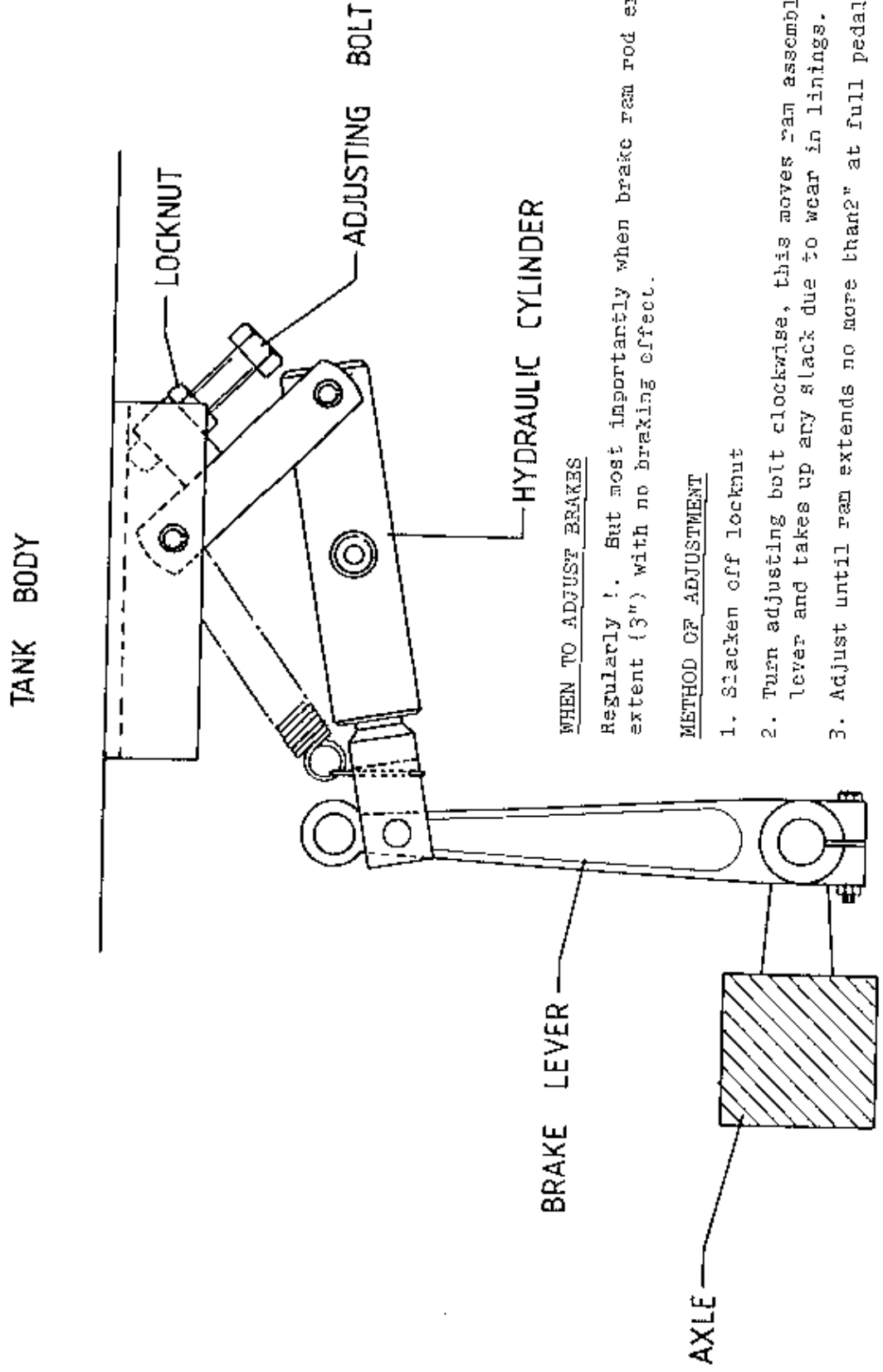


fig. 7.

TANCO SLURRY TANK HYDRAULIC BRAKES



WHEN TO ADJUST BRAKES

Regularly !. But most importantly when brake ram rod extends to full extent (3") with no braking effect.

METHOD OF ADJUSTMENT

1. Slacken off locknut
2. Turn adjusting bolt clockwise, this moves ram assembly towards brake lever and takes up any slack due to wear in linings.
3. Adjust until ram extends no more than 2" at full pedal pressure.

fig. 6.

G U A R A N T E E

Subject as hereunder provided, the Sellers undertake to correct either by repair, or at their election, by replacement, any defect of material or workmanship which in any of its goods within twelve months after delivery of such goods to a first user, with the exception of contractors or commercial users when warranty period is six months.

The term "goods" when used in this document means the article or articles described in invoice as sold by the Sellers but does not include equipment or proprietary parts or accessories not manufactured by the Sellers. The Sellers, however, undertake to pass on so far as they legally can, to the first user the benefit of any warranty given to the Sellers by the suppliers of such equipment, parts or accessories.

This understanding shall not apply to:

- (a) Any goods which have not been sold by the first user.
- (b) Any goods which have been injured by unfair wear and tear, neglect or improper use.
- (c) Any goods the identification marks of which have been altered or removed.
- (d) Any goods which have not received the basic normal maintenance such as tightening of bolts, nuts, lines, hose connections and fittings and normal lubrication.
- (e) The use of any production tractors exceeding the recommended horsepower.
- (f) Any goods which have been altered or repaired other than on instruction or with the written approval of the Sellers or to which any part not manufactured or having written approval by the Sellers has been fixed.
- (g) Any second-hand goods or part thereof.

Any allegedly defective part or parts returned to the Sellers must be sent carriage paid. No claim for repair or replacement will be entertained unless upon discovery of the alleged defect written notification is sent to the Sellers giving, at the same time, the name of the Buyer from whom the goods were purchased and the date of purchase together with full details of the alleged defect and the circumstances involved, also the serial number of the machine etc.

The Sellers shall be under no liability to their Buyers and first and subsequent users of their goods or to any other person or persons for loss or damages howsoever arising in respect of either personal injuries or for special or consequential damage of any kind from any cause whatsoever arising out of, or in any way connected with or arising from the manufacture, sale, handling, repair, maintenance, replacement or use of its goods or the failure or malfunction of any of its goods.

Representation and/or warranties made by any person (including Buyers and employees and other representatives of the Sellers) which are inconsistent or conflicting with these conditions are not binding upon the Sellers unless given in writing and signed by a Director of the Sellers.

C L A I M S

If you wish to make a claim under guarantee:

1. Immediately, stop using the machine.
2. List the details of the machine and damaged item (as shown inside the front cover of this booklet).
3. Consult with your Tanco dealer (supplier) and have him forward your claim and the damaged item to Tanco.